

VITA



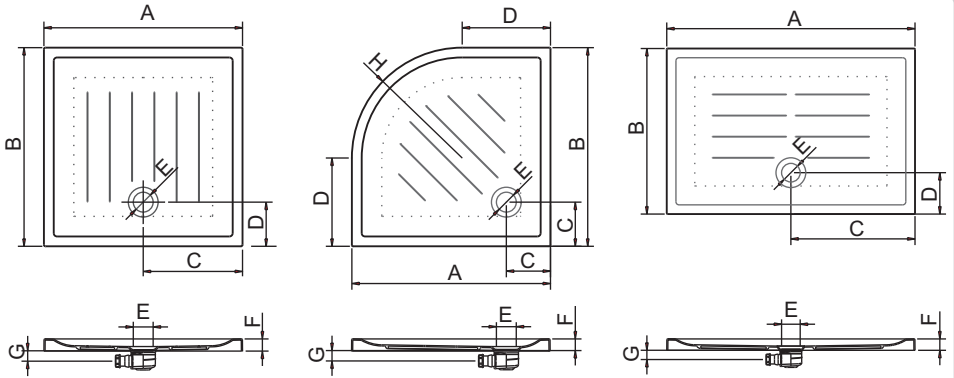
Español

**Platos de ducha acrílicos
Instrucciones de montaje**

English

**Acrylic shower tray
Installation instructions**

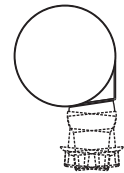
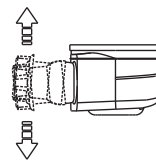
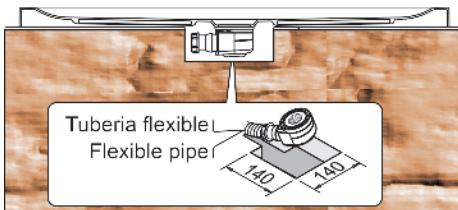
gala



Nota: cotas en mm.

Note: heights in mm.

		A	B	C	D	E	F	G	H
	800x800	800	800	400	200	Ø90	55	55	
	900x900	900	900	450	200	Ø90	55	55	
	1000x1000	1000	1000	500	200	Ø90	55	55	
	800x800	800	800	200	300	Ø90	55	55	R500
	900x900	900	900	200	400	Ø90	55	55	R500
	1000x1000	1000	1000	200	500	Ø90	55	55	R500
	1000x800	1000	800	200	500	Ø90	55	55	
	1200x800	1200	800	200	600	Ø90	55	55	
	1400x800	1400	800	200	700	Ø90	55	55	
	1600x800	1600	800	200	800	Ø90	55	55	



Salida con rótula articulada
Articulated ball joint outlet

Español

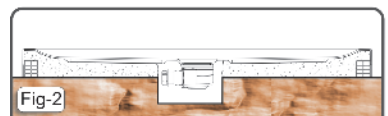
Este plato de ducha puede instalarse según se muestra en las Fig.1, 2 y 3.

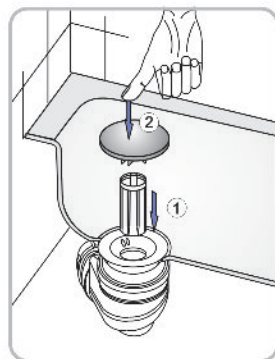
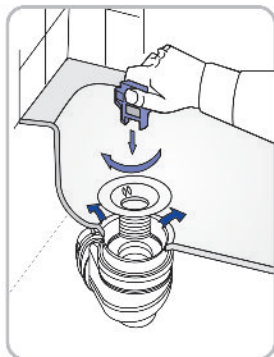
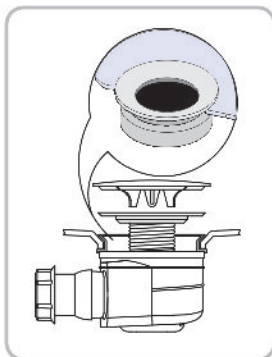
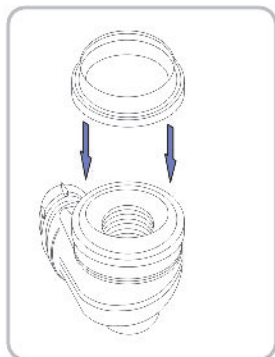
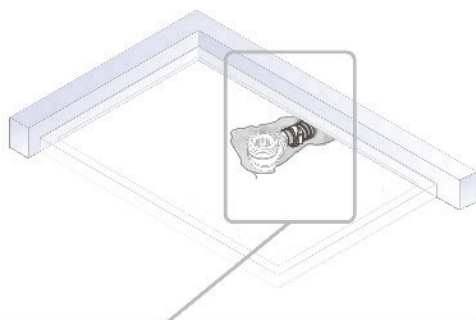
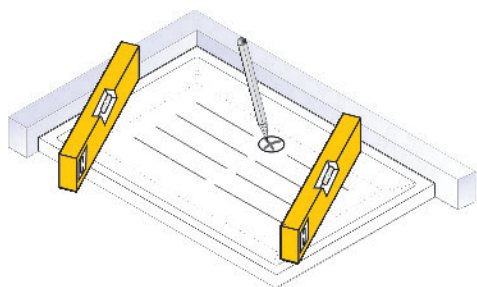
1. Empotrado
2. Semi-empotrado con apoyo
3. Soportado sobre la base de caja de arena o pies ajustables

English

This shower tray can be installed as shown in the drawings (Fig. 1, 2 y 3.):

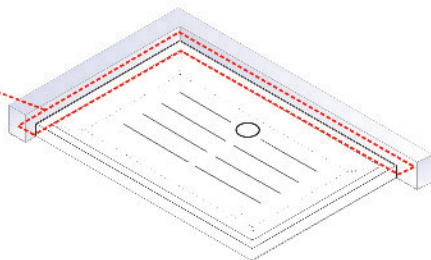
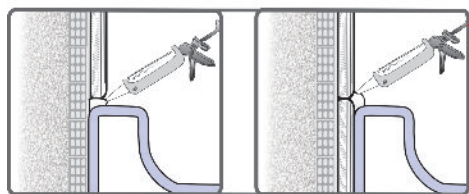
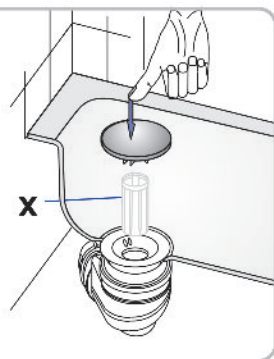
1. Embedded
2. Semi-embedded supported
3. Based in box sand or adjustable feet





En caso de existir bote
sifónico en la vivienda se
recomienda eliminar el
sifón del desagüe (X).

In case that a syphon box
already exists, we
recommend remove the
siphon from the waste
pipe (X).



gala

CERÁMICAS GALA, S.A.

Ctra. Madrid - Irún, Km. 244
Apartado de Correos, 293
09080 BURGOS - ESPAÑA
www.gala.es

 +34-947 47 41 00

 +34-947 47 41 03

e-mail: general@gala.es

24171 -06/08/10